

Ectopic pregnancy

It means the blastocyst does not implant within the uterine cavity. The most common site of implantation is the fallopian tube. It can implant in numerous places, even in the abdominal cavity.

Causes

- Delay ovum transport is primary causes ❖
- Tubal damage ❖
- Previous pelvic or tubal surgery ❖
- Endometriosis ❖
- Previous ectopic pregnancy ❖
- Presence IUD ❖
- Congenital anomalies of the tube ❖

Use of ovulation ❖

Primary infertility

Smoking

Advanced maternal age

DX

Careful assessment of menstrual ❖

Careful pelvic exam ❖

Laboratory testing ❖

Physical examination ❖

Ultrasonography ❖

Laparoscopy ❖

Complication

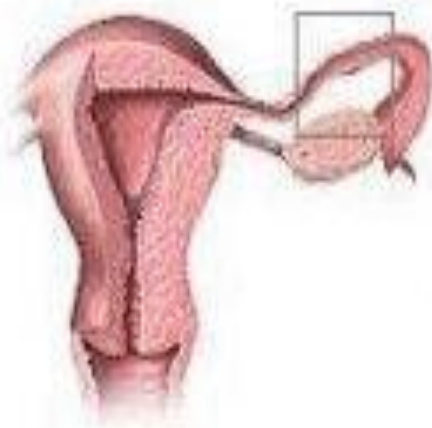
Sever blood loss ❖

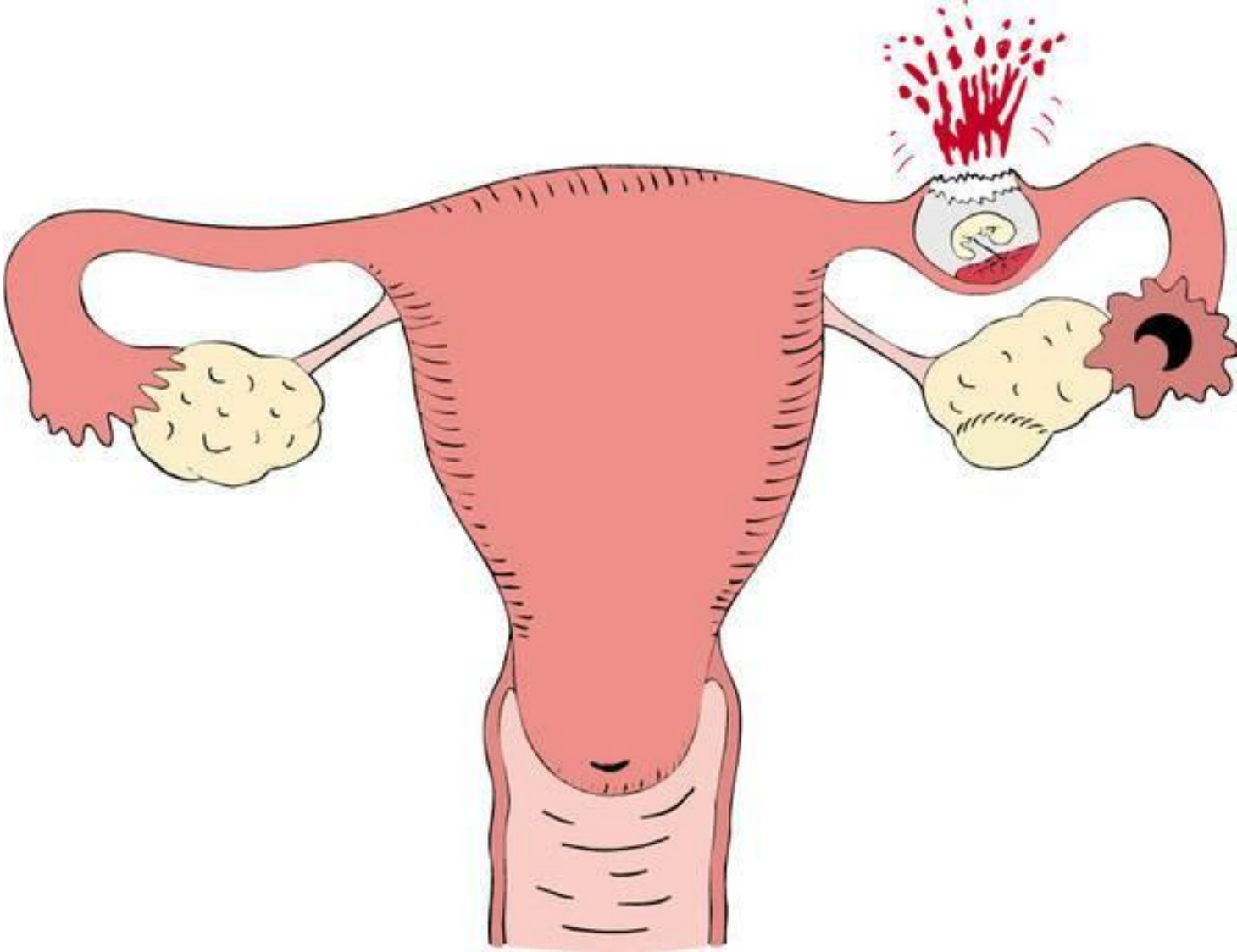
Residual trophoblastic tissues which cause ❖
infection

Future infertility ❖

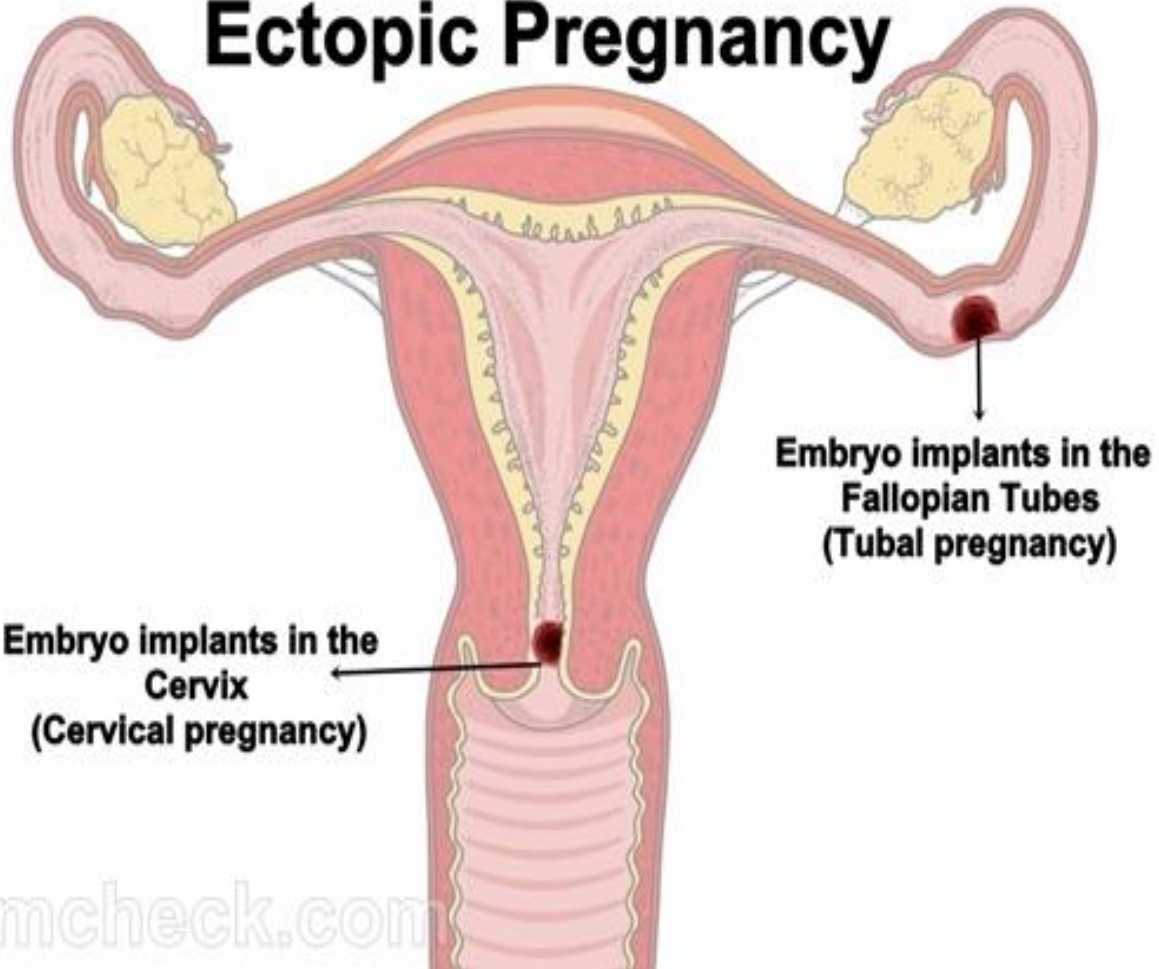
جنين
(حمل خارج الرحم)

قنات فالوب





Ectopic Pregnancy



Thank
You

